

TECHNICAL SPECIFICATIONS

QBOX PROGRAM BY NUKLEE

Fecha 07.05.2026

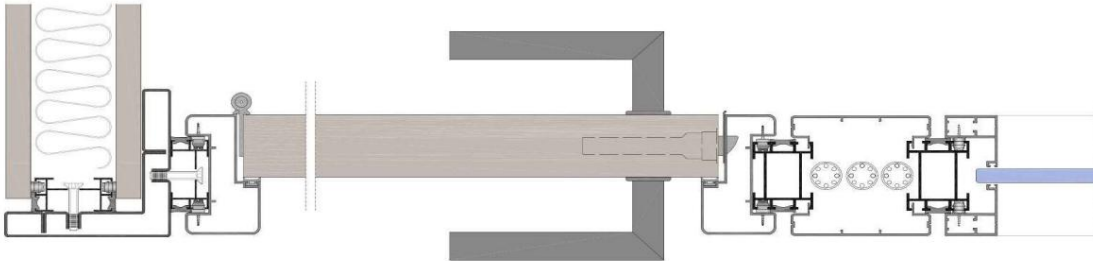
COLOR PANELS	SMOOTH MELAMINE:	02-MLSB	WHITE MATTE TEXT
		02-MLSG1	LIGHT PLAIN GRAY
		02-MLSG2	GRAY DARK TEXT
		02-MLS01	ALUMINUM MATTE TEXT
	MELAMINE WOOD:	02-MMAA	MAPLE
	02-MMAH	IS	
	* TEXTILE UPHOLSTERED MELAMINE:		* STANDARD OPTION
			* PREMIUM OPTION
COLOR STRUCTURE		08-ANPM	ANODIZED.MATTE SILVER
		08-LA9011M	SMOOTH MATTE BLACK
		08-LA9010M	SMOOTH MATTE WHITE
DOOR FRAME	STRAIGHT - 805		
INTERSECTION	9mm		
SCALED PANELS	Edge thickness 0.4mm		
RUBBER COLOR	Aluminum Color	Rubber Color	
	GLAZING PROFILES	04-TR	TRANSPARENT
	DOOR FRAME PROFILE / INTERSECTION, aluminum color		
	SILVER ALUMINUM M. / WHITE:	4 PM	SILVER
	BLACK ALUMINUM:	04-9011	BLACK
LOWER BASE	801 + Metal profile		
UPPER CORONATION	802 - CORONATION		
START-UPS	802 - Corner metal profile		
90° CORNER	100x100 angle metal profile		
	Special to testa		
PROFILES 1 GLASS	A TESTA		
PROFILES 2 GLASS	A TESTA		
BLIND DOOR HARDWARE			
	HINGES: Aluminum Color	Rubber Color	
	MATTE SILVER	FLAT SILVER HINGE	
	WHITE MATTE TEXT	WHITE FLAT HINGE	
	BLACK M.	BLACK FLAT HINGE	
	MANETA: 07-MNTU-U-PM	SILVER "U" TUBULAR LEVER	
	07-MNTU-R*	TUBULAR HANDLE "R" STAINLESS STEEL*	
GLASS DOOR HARDWARE	07-BISTD05PM	SQUARE SILVER HINGES	
	07-BISTD05INOX*	SQUARE STAINLESS STEEL HINGES*	
	07-MNTU-U05PM	SILVER "U" TUBULAR LEVER	
	07-MNTU-U05INOX*	TUBULAR "L" STAINLESS STEEL HANDLE*	
FRAMED DOOR HARDWARE	HINGES	SAME AS BLIND DOORS	
A CRYSTAL	07-ADPENV	ADAPTER:	
	Aluminum Color	Color Adapter	
	MATTE SILVER	MATTE SILVER LACQUER	
	WHITE	WHITE	
	BLACK	BLACK	
	07-MNTU-U-PM	SILVER "U" TUBULAR LEVER	
	07-MNTU-R*	TUBULAR HANDLE "R" STAINLESS STEEL*	
FRAMED DOOR HARDWARE	HINGES	SAME AS BLIND DOORS	
DOUBLE GLAZING	07-MNTU-U-IN	STAINLESS STEEL "U" TUBULAR HANDLE	

(*) OPTIONAL (Please inquire about price and/or delivery time)

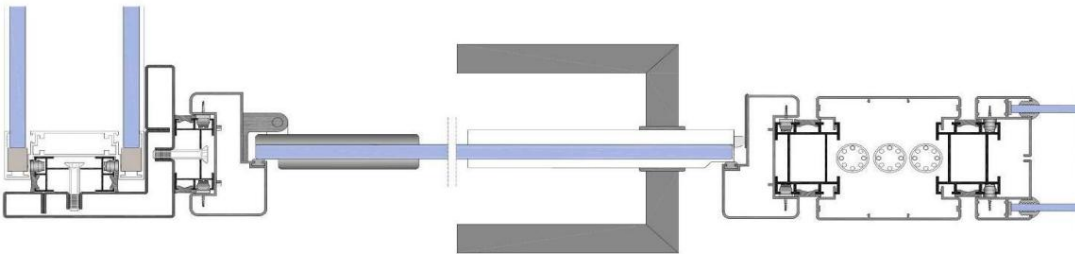
TECHNICAL DETAILS

Door frames

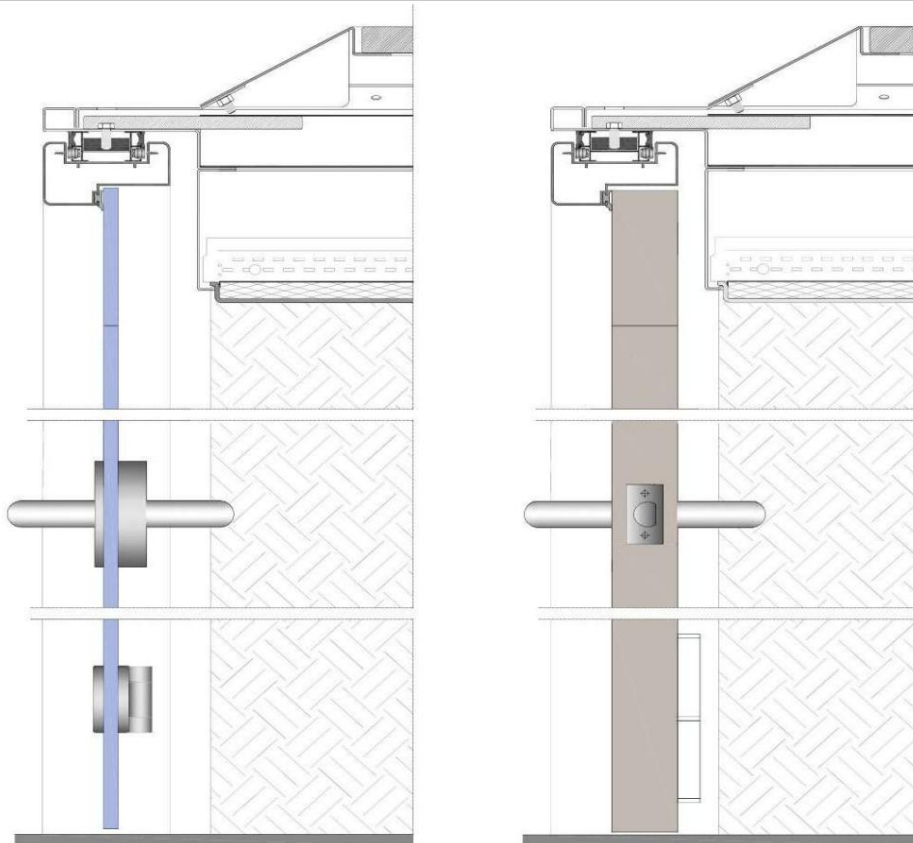
Horizontal section of a blind door



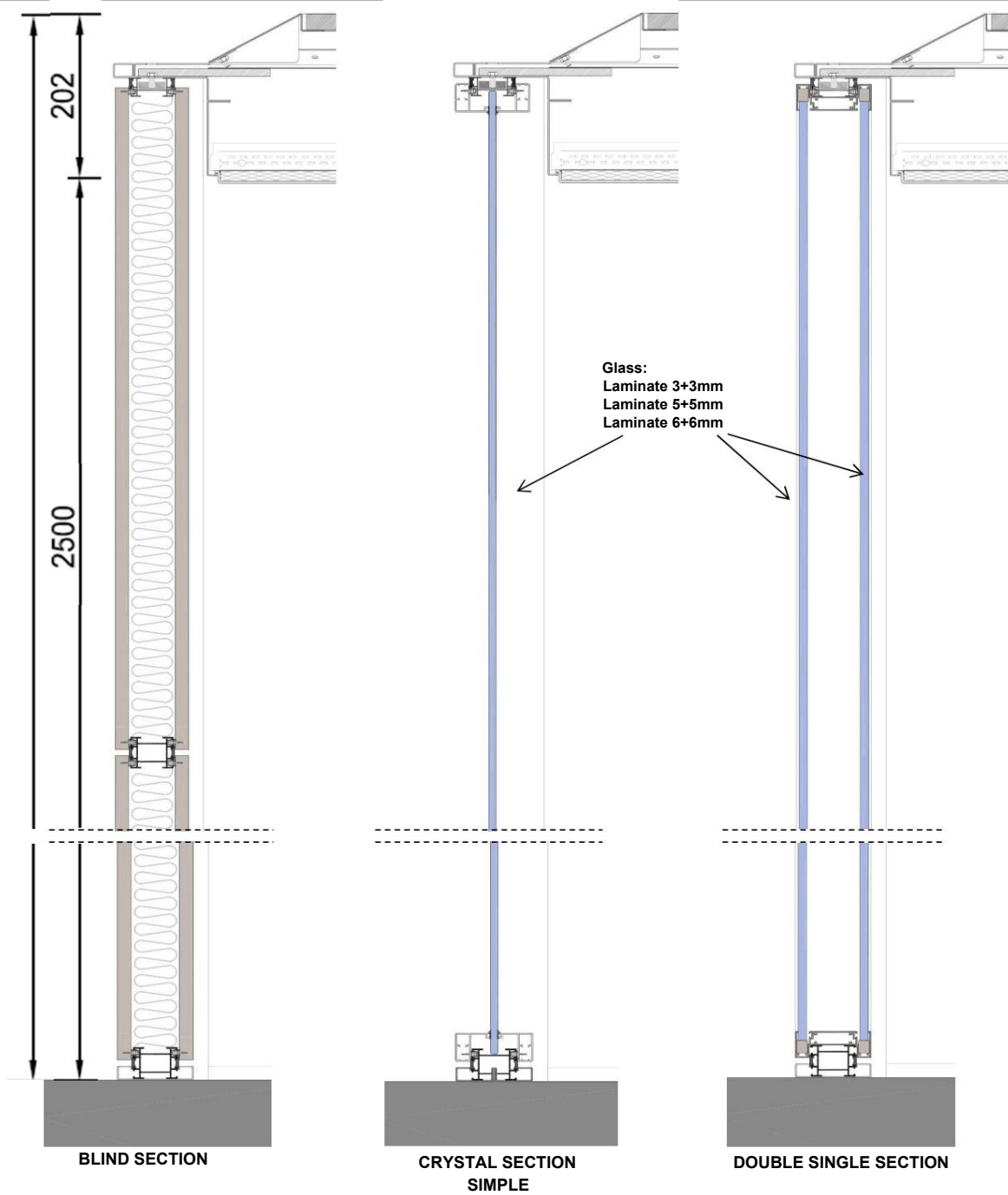
Horizontal section glass door



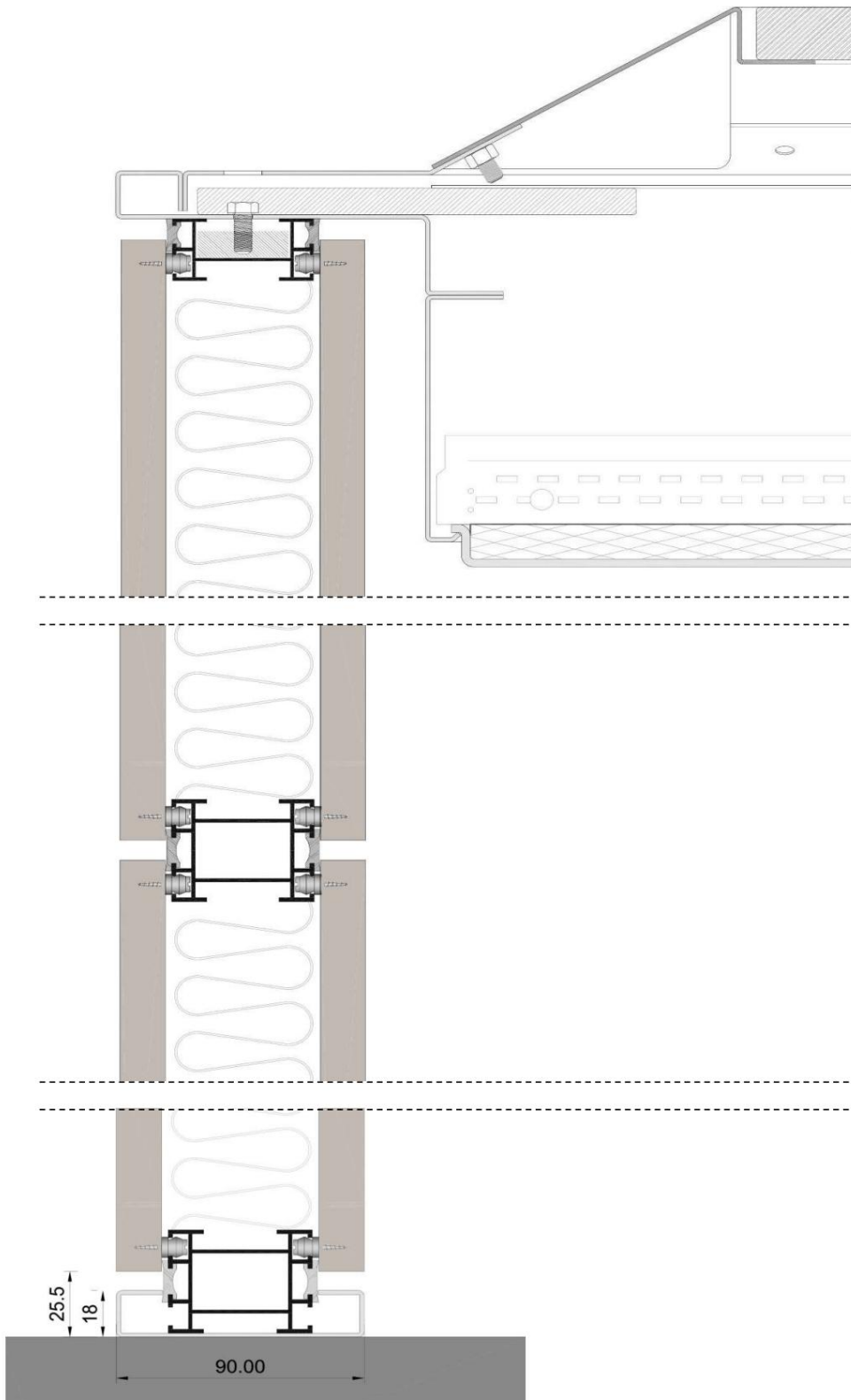
Vertical sections, solid door and glass



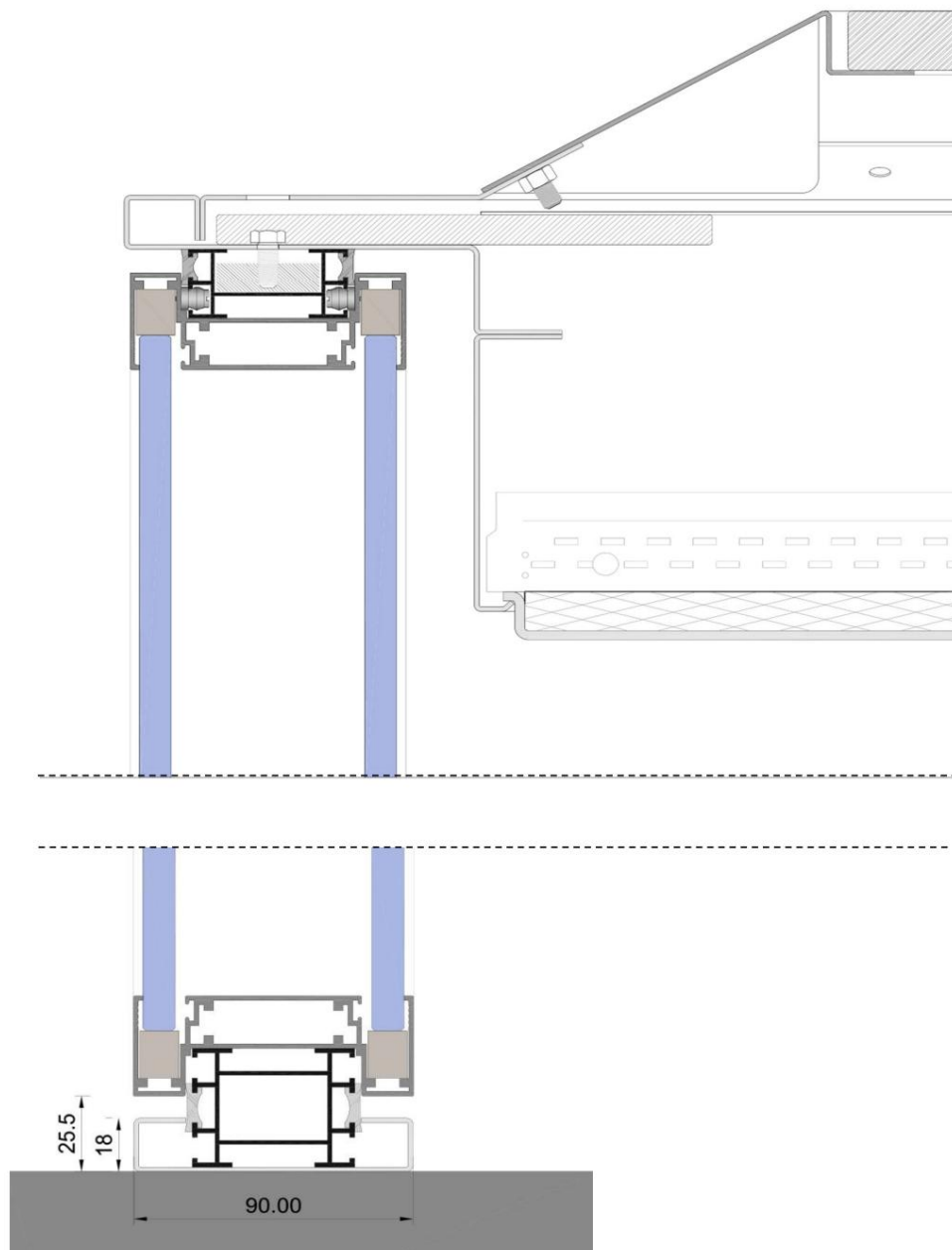
Vertical sections from floor to ceiling



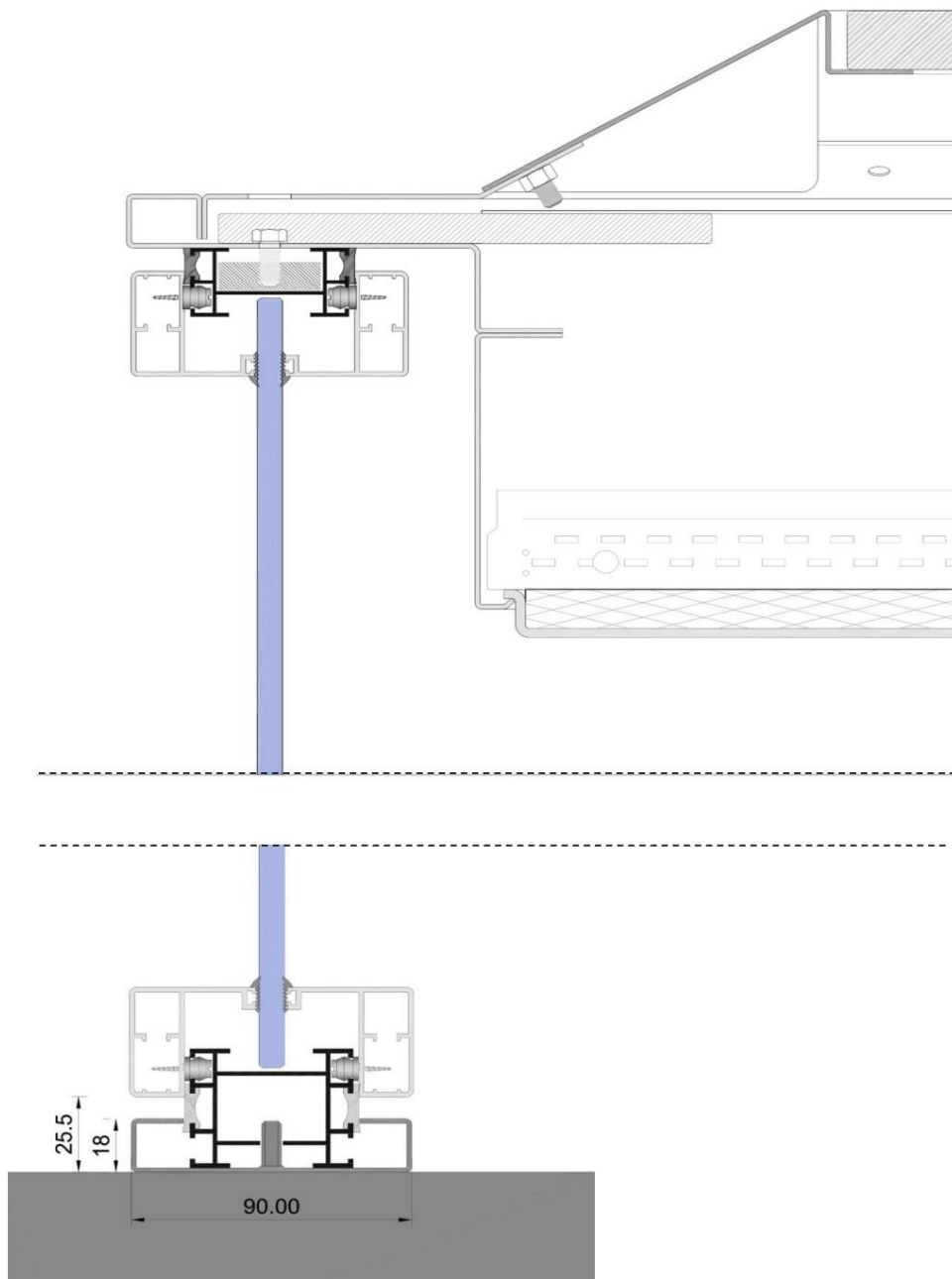
Vertical sections, junctions with floor and ceiling



Vertical sections, junctions with floor and ceiling

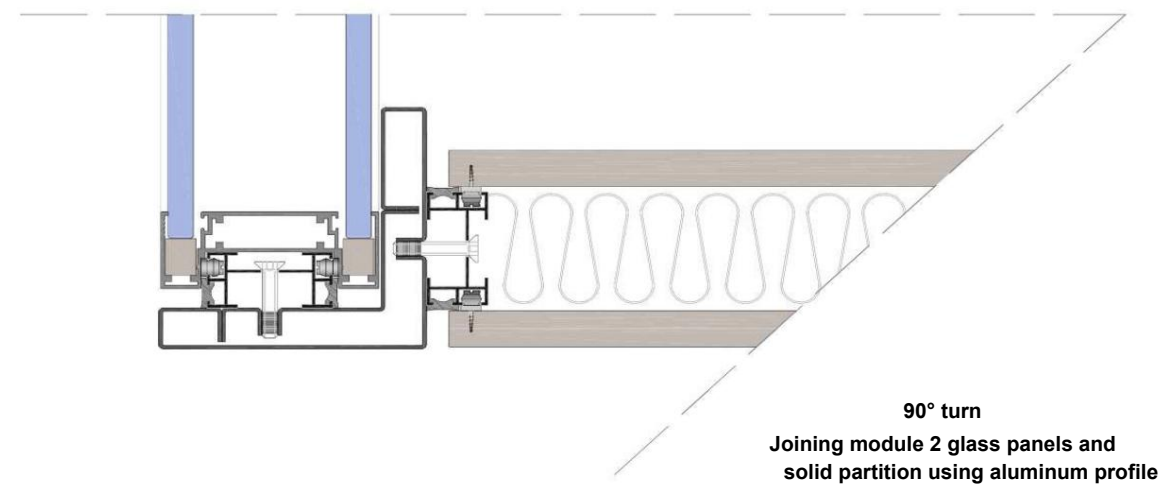
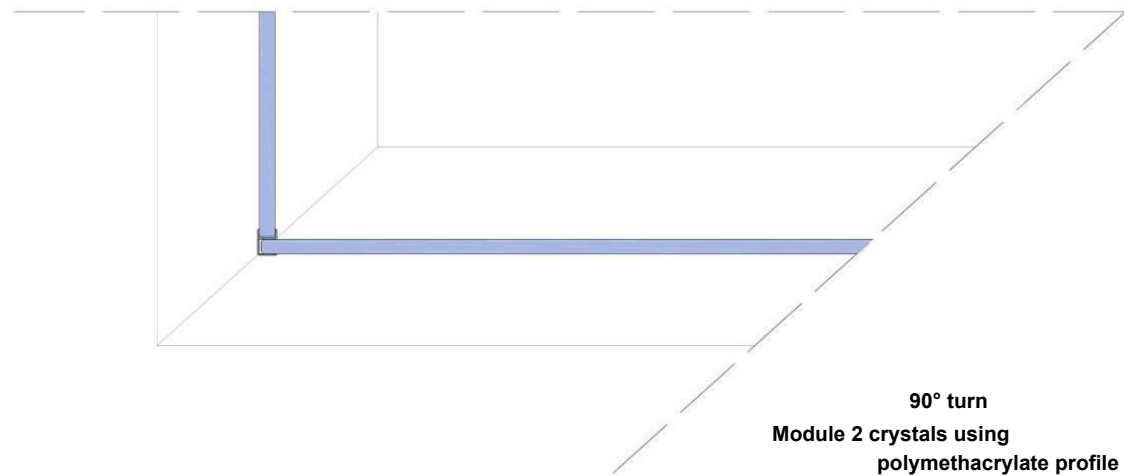
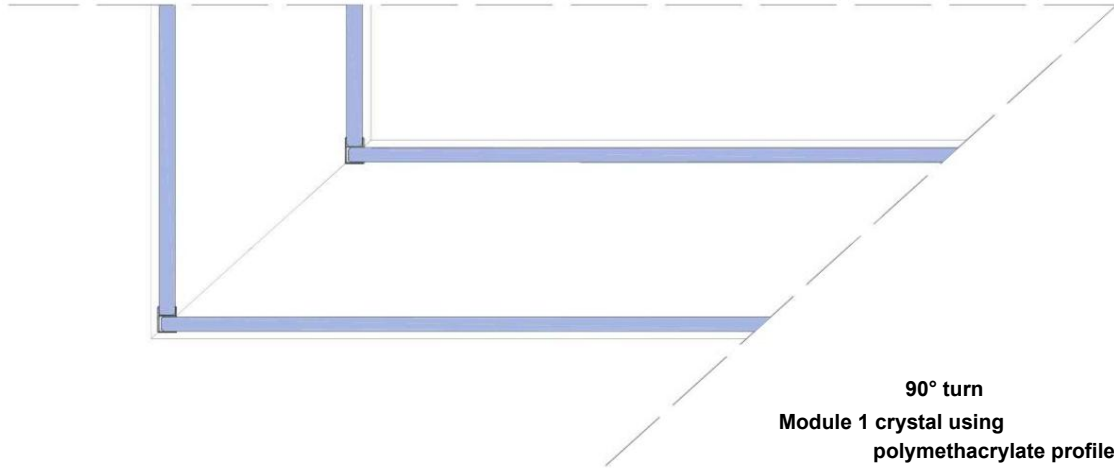


Vertical sections, junctions with floor and ceiling



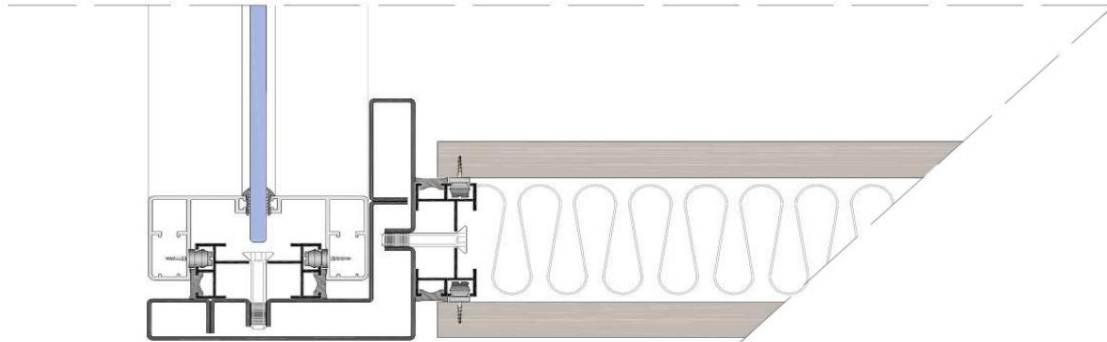
Horizontal sections

90° Joints

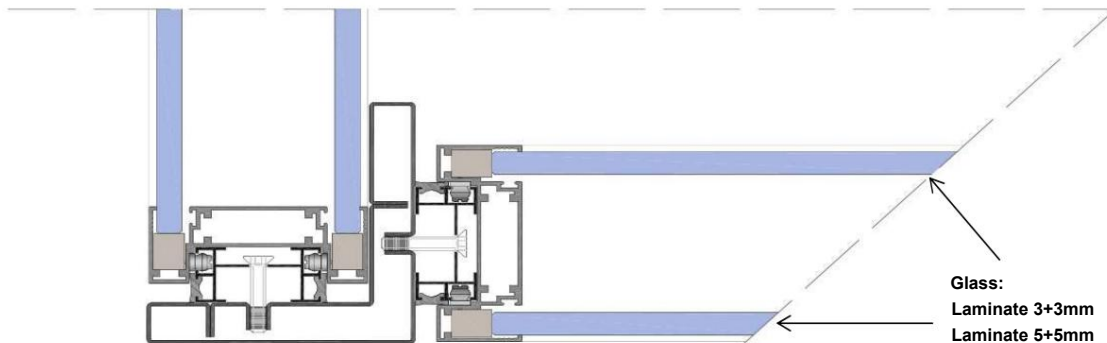


Horizontal sections

90° Joints

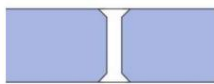


90° turn
Joining module 1 glass and solid
partition using an aluminum profile

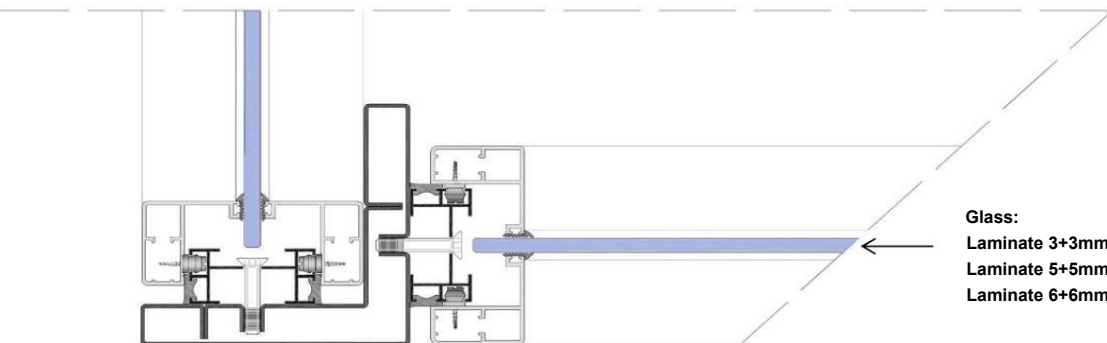


Glass:
Laminate 3+3mm
Laminate 5+5mm
Laminate 6+6mm

90° turn
Joining modules of 2 glass panes using
an aluminum profile



FLUSH SEMI-RIGID PROFILE
POLYMETHACRYLATE



Glass:
Laminate 3+3mm
Laminate 5+5mm
Laminate 6+6mm

90° turn
Joining modules 1 glass using an
aluminum profile

**TUBULAR HANDLE
"U" SILVER**



**LOCK AND
MAGNETIC CLOSURE**



**TUBULAR L-HANDLE
INOX***



GLASS DOOR PROGRAM

STANDARD

SILVER "U" TUBULAR LEVER

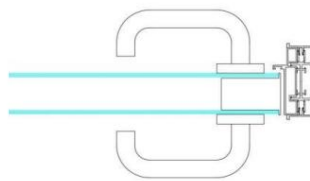
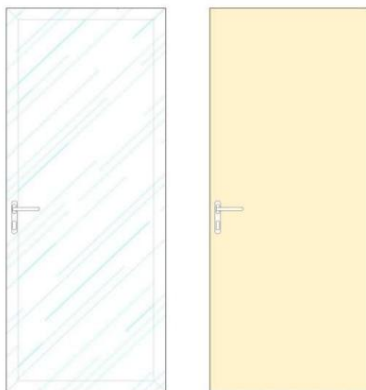


OPTIONAL*

TUBULAR "L" STAINLESS STEEL HANDLE*



DOUBLE GLAZED DOOR PROGRAM / ALUMINUM PROFILE PANEL ***

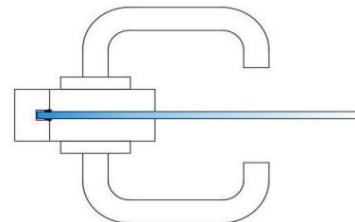
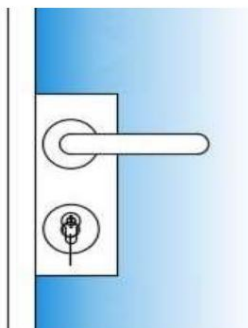


HARDWARE:

**Flat hinges, aluminum color
Tubular handle "U" INOX finish**



Framed glass door program ***



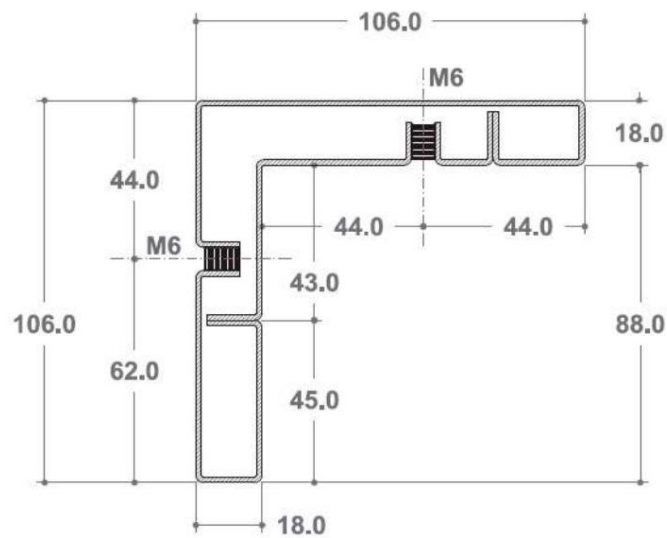
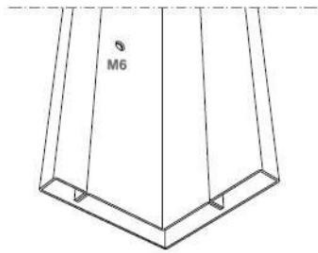
HARDWARE:

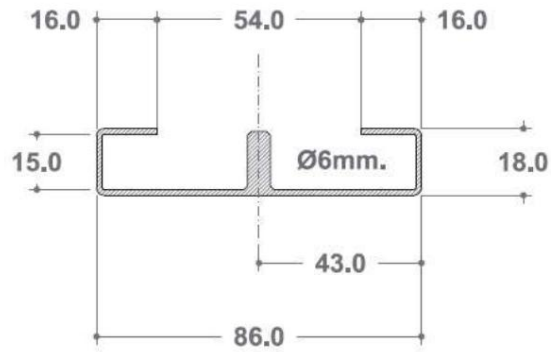
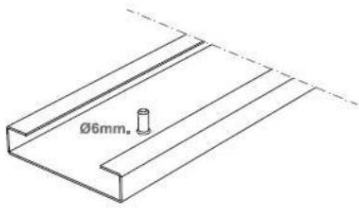
**Flat hinges, aluminum color
Envatech adapter, aluminum color
SILVER tubular "U" lever
INOX* tubular handle "R"**

(*) Special door leaves. Please inquire about price and delivery time.**

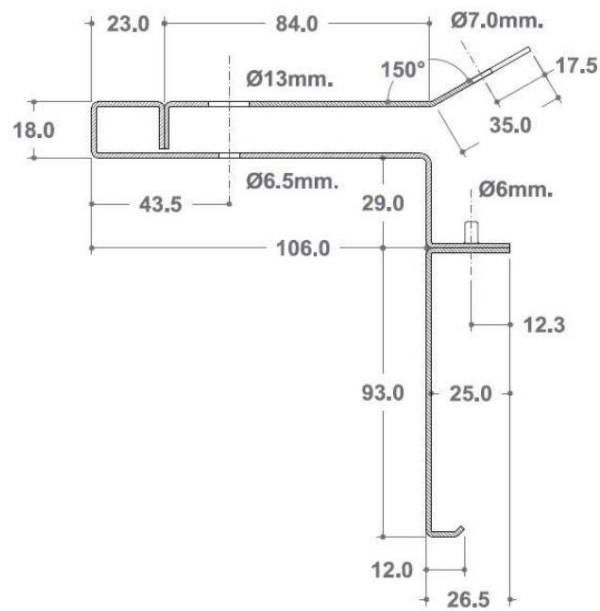
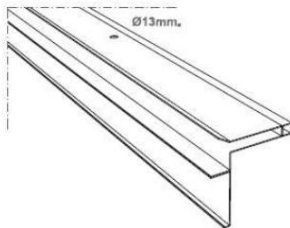
QBox by Nuklee is primarily composed of a perimeter metal structure, making it a self-supporting office in all its available sizes. The metal profiles detailed below are manufactured from 1.50 mm thick S-275-JR polished steel sheet, laser-cut, folded, and tungsten-welded. The final finish consists of two coats of primer, which protects the profile from corrosion and facilitates subsequent spray painting to achieve the final finish.

PF-1 Profile

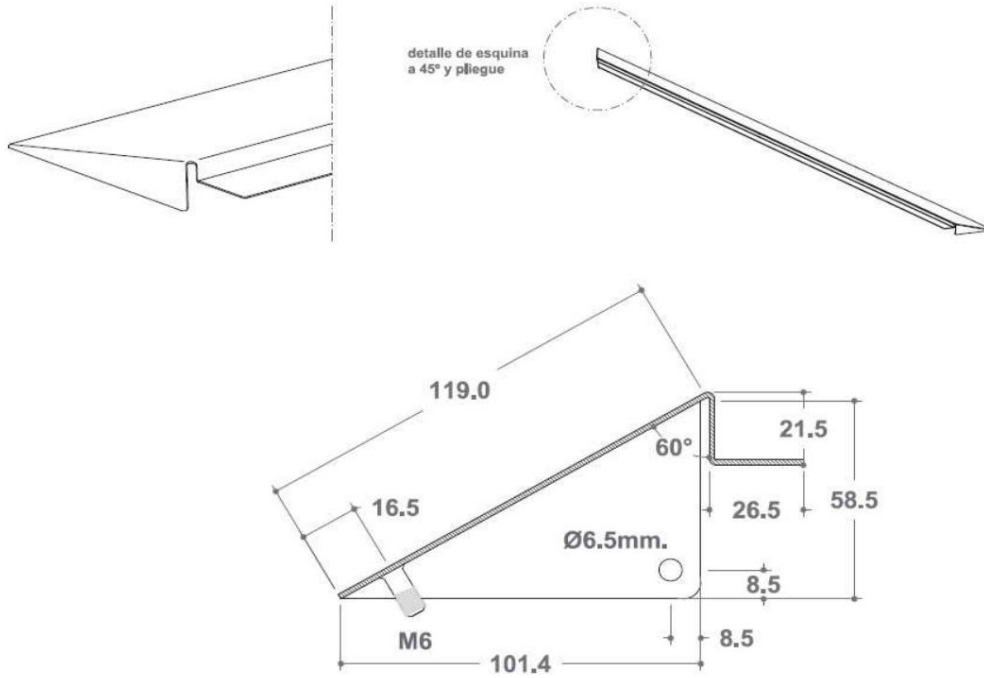




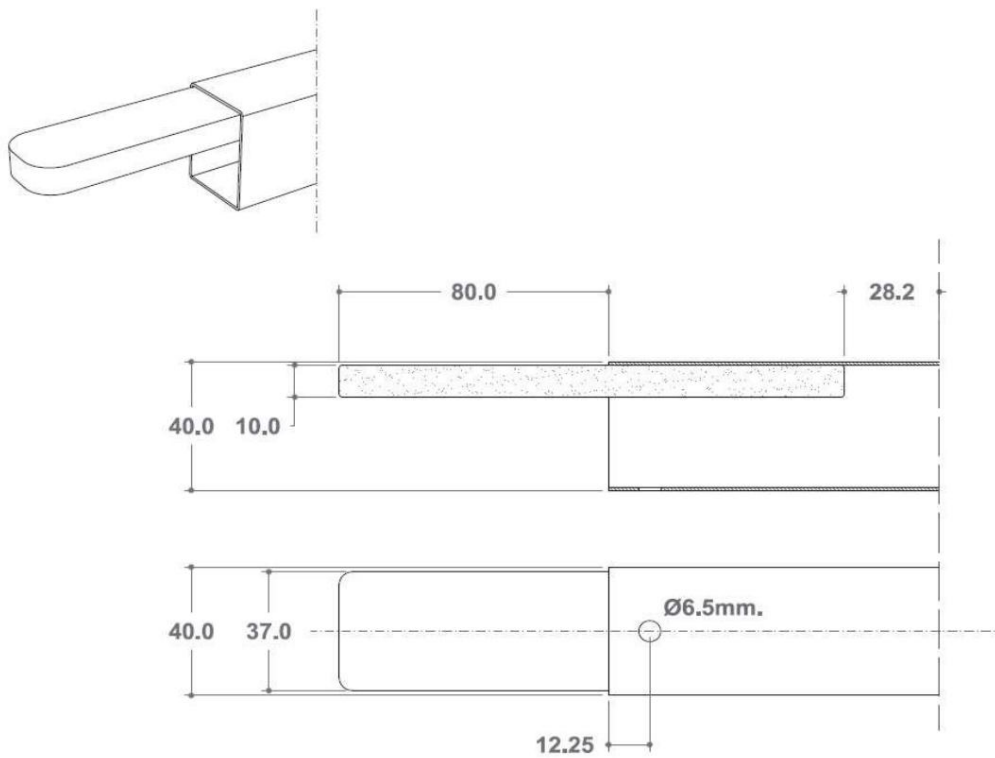
PF-3 Profile



PF-4 Profile



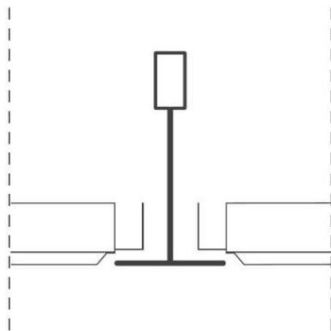
ET-1 Profile



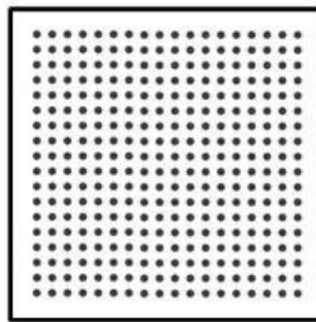
FALSE CEILING AND LIGHTING

Option 1: 600x600 metal false ceiling with micro-perforated panel + 600x600 LED screen lighting

Suspended technical ceiling composed of micro-perforated metal trays of 600 x 600mm and visible profile with T24 profile anchored to existing slab using rod Threaded. Plates flush with the profiles and with 1.5mm micro-perforations U-shaped diameter (10% perforation), with 0.2mm thick acoustic veil (fixed by thermal activation on the underside of the tray) which prevents dust deposition and dirt.



Profile and plate details
Flush plate with visible T24 profile

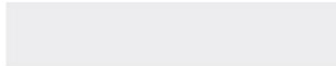


Detail of microperforated plate
Perforated Ø 1.5mm
U | 11% perforated
ML | 5% perforated

Drilling yw up to		Acoustic Absorption Class	Reaction to Fire, Durability, % Recycled Material up to		
Ø 1.5 U	0.65	C	a2-s1, d0	Class B	25%

Available license plate colors

White RAL 9010



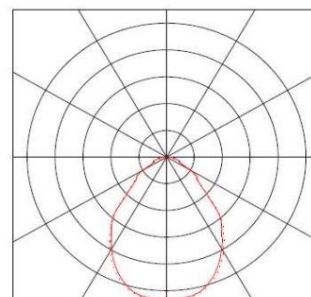
Silver RAL 9006



* Other colors available upon request

The 600x600 LED panel lighting in the Qbox meets the requirements of CTE-DB-HE3, which requires a minimum illuminance of 500 lux for office areas and a UGR (Unified Glare Index) less than or equal to 19.

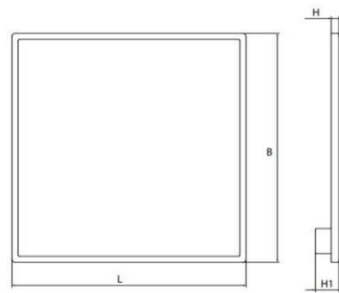
The square LED surface-mounted indoor luminaires are composed of a painted extruded aluminum body, white in color, LED Sidelight-Technology adjustable optics in plastic for homogeneous light diffusion and a luminous power of 38 watts.



Summary of features

Degree of efficiency	100%
Luminous efficiency	78.95 lm/W
Classification	A50 y 100.00% y 0.00%
UGR	<19
Color temperature	4000
Luminous flux	3000 lm
Color reproduction	80
System performance	38W
Length	600mm
Width	600mm
Thickness	10mm

Photometry of 600x600 LED panel



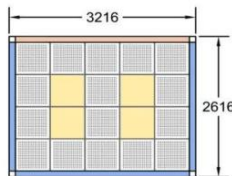
LED panel dimensions details
Flush plate with visible T24 profile

Distribution of luminaires according to model:



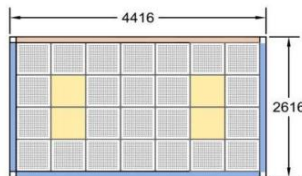
Despacho D01

2,6 x 3,2 x 2,7h m



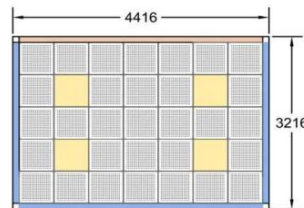
Despacho D02

2,6 x 4,4 x 2,7h m



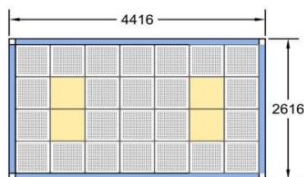
Despacho D03

3,2 x 4,4 x 2,7h m



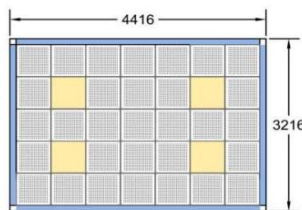
Reuniones R01

2,6 x 4,4 x 2,7h m



Reuniones R02

3,2 x 4,4 x 2,7h m



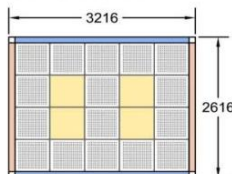
Reuniones R03

3,5 x 6 x 2,7h m



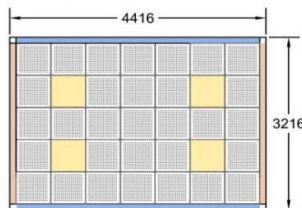
Trabajo en equipo TE01

2,6 x 4,4 x 2,7h m



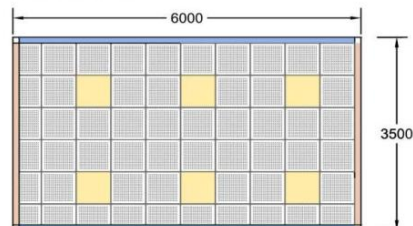
Trabajo en equipo TE02

3,2 x 4,4 x 2,7h m



Trabajo en equipo TE03

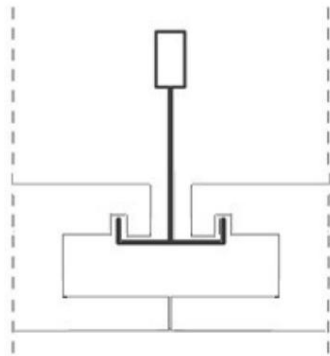
3,5 x 6 x 2,7h m



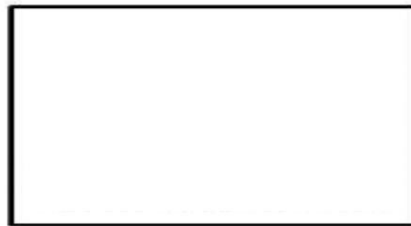
FALSE CEILING AND LIGHTING

Option 2: 300xLV metal false ceiling + 60xLV LED track lighting

Technical suspended ceiling with access panel, composed of smooth metal trays measuring 300 x Length Variable (variable length depending on QBox type) and hidden profiles with Clip-in system anchored to existing slab using threaded rod. Shaped plates by folding, manufactured with 0.50mm pre-lacquered galvanized steel sheet thickness. Pre-lacquered in polyester with a minimum layer thickness of 25.



Profile and plate details
Plate with concealed Clip-In profile

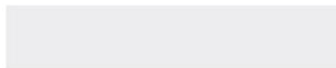


Detail of smooth plate

Perforation	γw up to	Acoustic Absorption Class	Reaction to Fire	Durability %	Recycled Material up to
Lisa	-	-	a2-s1, d0	Class B	25%

Available license plate colors

White RAL 9010



Silver RAL 9006



* Other colors available upon request

The linear Light-Performer lighting in the Qbox meets the requirements of CTE-DB-HE3, which requires a minimum illuminance of 500 lux for office areas and a UGR (Unified Glare Index) less than or equal to 19.

Light-Performer lighting system with linear configuration, composed of extruded aluminum design elements, recessed into the ceiling with an overlapping and surrounding profile frame (recessed depth 60mm, width 56mm).

Microprism cover for efficient light dispersion, glare minimization, and high uniformity and homogeneous distribution of luminance across the entire light output surface.



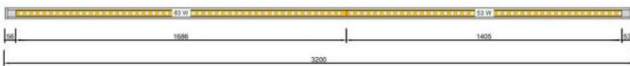
Lane length

Each Qbox has a specific lane length associated with it. This is the relationship between lane lengths and Qbox types.

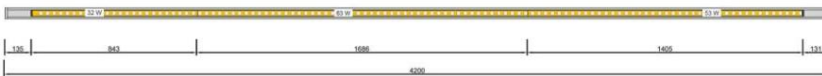
Qbox model	Lane length
Office D01	3200 mm
Office D02	4200 mm
Office D03	4200 mm
R01 Meetings	4200 mm
R02 Meetings	4200 mm
R03 Meetings	2 units x 5800 mm
Teamwork TE01	4200 mm
Teamwork TE02	4200 mm
Teamwork TE03	2 units x 5800 mm

Lane details

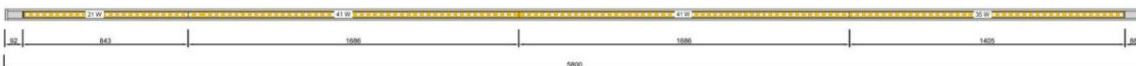
3200 mm rail



4200 mm rail

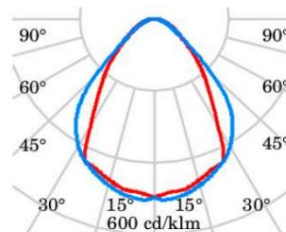


5800 mm rail



3200 mm rail

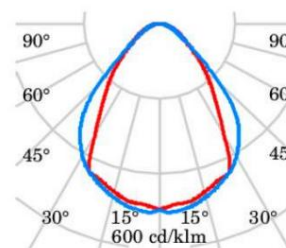
Luminous efficiency	92 lm / W
UGR	<19
Color temperature	4000 K
Luminous flux	10.641 lm
Color reproduction	80
System performance	116 W
Length	3,200 mm
Width	56 mm
Thickness	60 mm



3200mm rail photometry

4200 mm rail

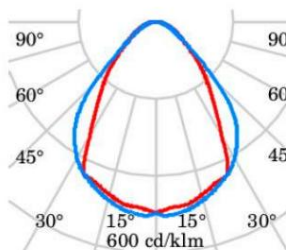
Luminous efficiency	92 lm / W
UGR	<19
Color temperature	4000 K
Luminous flux	13.543 lm
Color reproduction	80
System performance	148 W
Length	4,200 mm
Width	56 mm
Thickness	60 mm



4200mm rail photometry

5800 mm rail

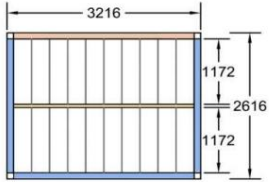
Luminous efficiency	87 lm / W
UGR	<19
Color temperature	4000 K
Luminous flux	11,960 lm
Color reproduction	80
System performance	138 W
Length	5,800 mm
Width	56 mm
Thickness	60 mm



Photometry track 5800mm

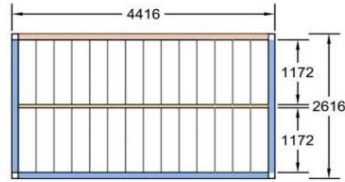
Despacho D01

2,6 x 3,2 x 2,7h m



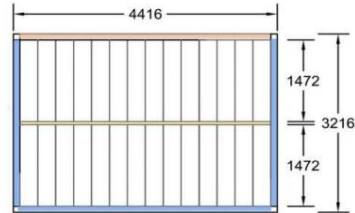
Despacho D02

2,6 x 4,4 x 2,7h m



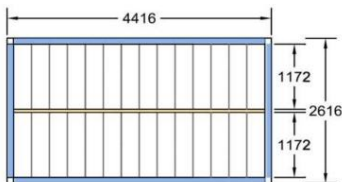
Despacho D03

3,2 x 4,4 x 2,7h m



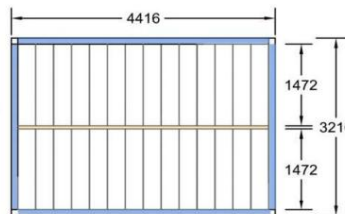
Reuniones R01

2,6 x 4,4 x 2,7h m



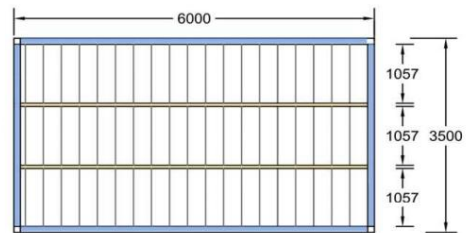
Reuniones R02

3,2 x 4,4 x 2,7h m



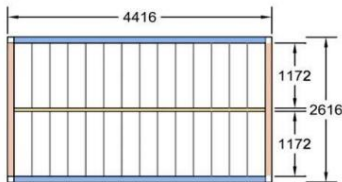
Reuniones R03

3,5 x 6 x 2,7h m



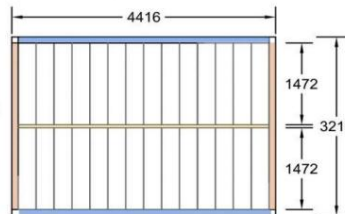
Trabajo en equipo TE01

2,6 x 4,4 x 2,7h m



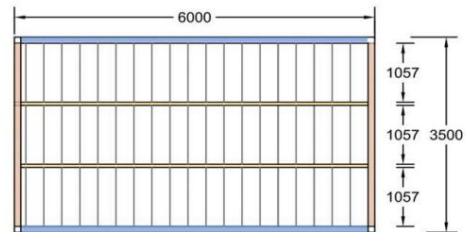
Trabajo en equipo TE02

3,2 x 4,4 x 2,7h m



Trabajo en equipo TE03

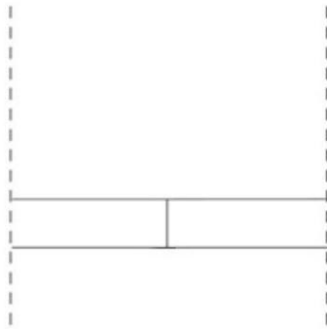
3,5 x 6 x 2,7h m



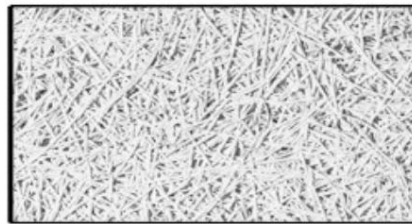
FALSE CEILING

Option 3: False ceiling with wood chips 600xLV + LED track lighting 60xLV

Technical suspended ceiling made of wood chip composite panels cement-bonded with fire reaction class A2, with dimensions 600 x Variable Length (variable length depending on the type of QBox) and concealed profiles with clip-in system anchored to existing slab using rod threaded.



Detail of butt joints between plates



Detail of smooth plate

Chip width \dot{y}	up to Acoustic Absorption	Class Reaction to fire	Durability %	Recycled material up to
2 mm	0.95	TO	B-S1, d0	Class B 50%

Available license plate colors

Natural



Black painted



* Other colors available upon request

The linear Light-Performer lighting in the Qbox meets the requirements of CTE-DB-HE3, which requires a minimum illuminance of 500 lux for office areas and a UGR (Unified Glare Index) less than or equal to 19.

Light-Performer lighting system with linear configuration, composed of extruded aluminum design elements, recessed into the ceiling with an overlapping and surrounding profile frame (recessed depth 60mm, width 56mm).

Microprism cover for efficient light dispersion, glare minimization, and high uniformity and homogeneous distribution of luminance across the entire light output surface.



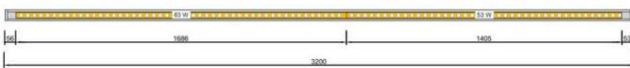
Lane length

Each Qbox has a specific lane length associated with it. This is the relationship between lane lengths and Qbox types.

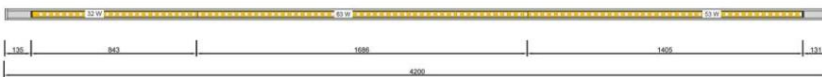
Qbox model	Lane length
Office D01	3200 mm
Office D02	4200 mm
Office D03	4200 mm
R01 Meetings	4200 mm
R02 Meetings	4200 mm
R03 Meetings	2 units x 5800 mm
Teamwork TE01	4200 mm
Teamwork TE02	4200 mm
Teamwork TE03	2 units x 5800 mm

Lane details

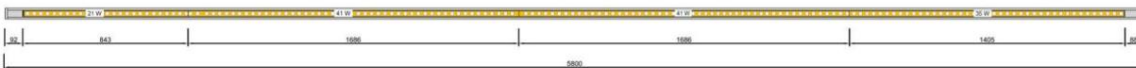
3200 mm rail



4200 mm rail



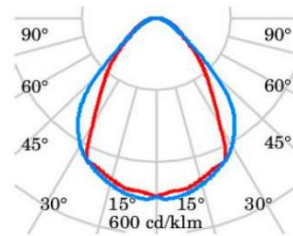
5800 mm rail



Summary of features

3200 mm rail

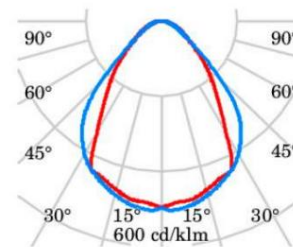
Luminous efficiency	92 lm / W
UGR	<19
Color temperature	4000 K
Luminous flux	10.641 lm
Color reproduction	80
System performance	116 W
Length	3,200 mm
Width	56 mm
Thickness	60 mm



3200mm rail photometry

4200 mm rail

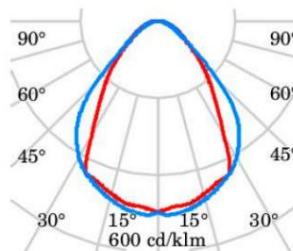
Luminous efficiency	92 lm / W
UGR	<19
Color temperature	4000 K
Luminous flux	13.543 lm
Color reproduction	80
System performance	148 W
Length	4,200 mm
Width	56 mm
Thickness	60 mm



4200mm rail photometry

5800 mm rail

Luminous efficiency	87 lm / W
UGR	<19
Color temperature	4000 K
Luminous flux	11,960 lm
Color reproduction	80
System performance	138 W
Length	5,800 mm
Width	56 mm
Thickness	60 mm



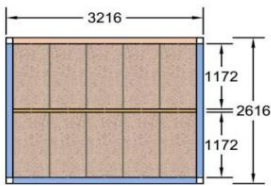
Photometry track 5800mm

Distribution of luminaires according to model:



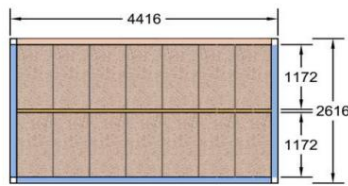
Despacho D01

2,6 x 3,2 x 2,7h m



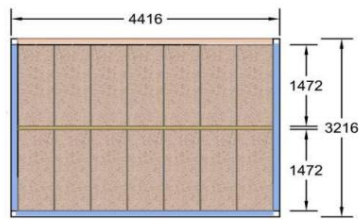
Despacho D02

2,6 x 4,4 x 2,7h m



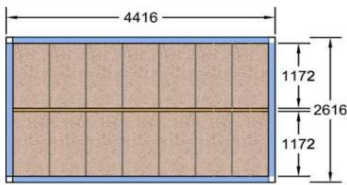
Despacho D03

3,2 x 4,4 x 2,7h m



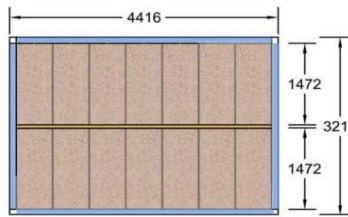
Reuniones R01

2,6 x 4,4 x 2,7h m



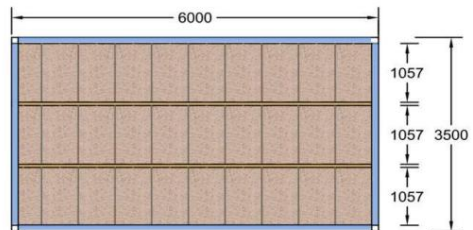
Reuniones R02

3,2 x 4,4 x 2,7h m



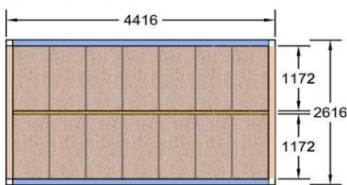
Reuniones R03

3,5 x 6 x 2,7h m



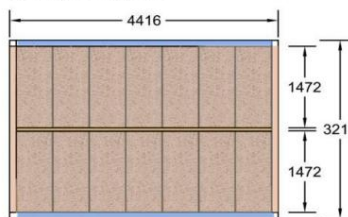
Trabajo en equipo TE01

2,6 x 4,4 x 2,7h m



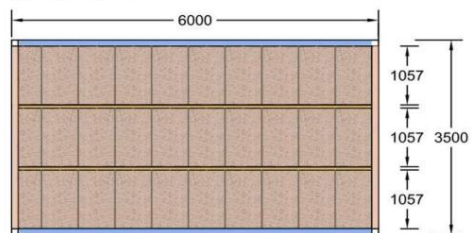
Trabajo en equipo TE02

3,2 x 4,4 x 2,7h m



Trabajo en equipo TE03

3,5 x 6 x 2,7h m



MECHANISMS INSTALLATIONS

Standard Option



White

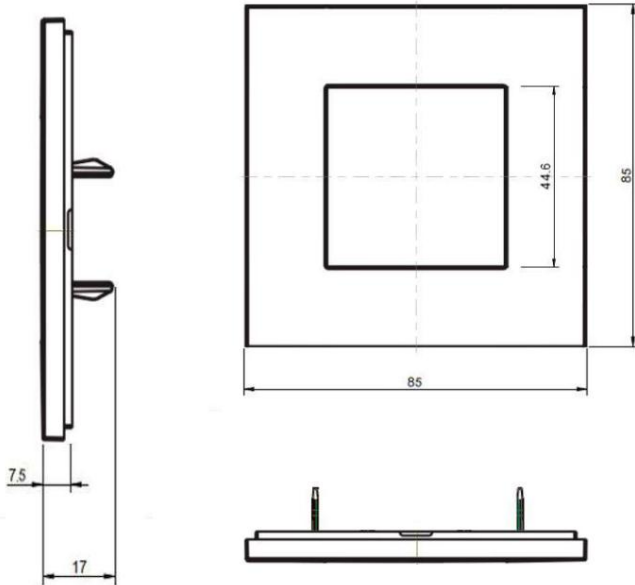


Silver



Black

Technical details



Premium Option



White

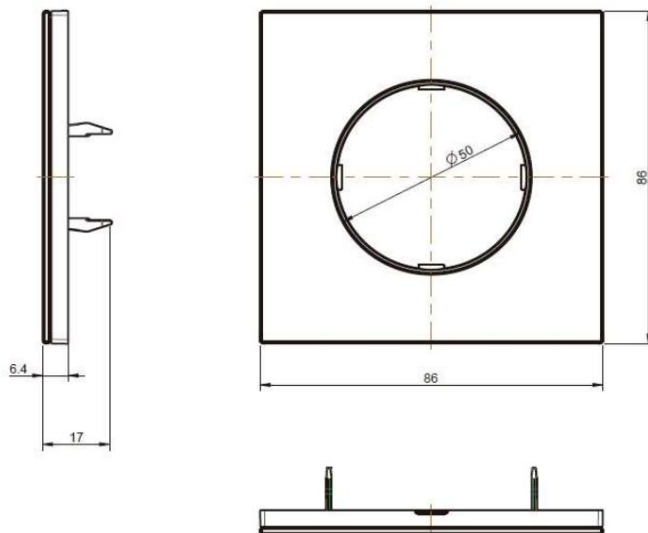


Silver



Black

Technical details



FACILITIES

Model	Volume (m³)	Usual occupation	Maximum occupancy	Model	VR / VL Drainage Free
D01	22.10 m³	1.00 person/s	2.00 person/s	TD 250/200	VL 200
D02	28.60 m³	1.00 person/s	3.00 person/s TD 250/200	3.00 person/s	VL 200
D03	34.32 m³	1.00 person/s	s	TD 250/200	VL 200
R01	28.60 m³	6.00 person/s	8.00 person/s	TD 250/200	VR 250
R02	34.32 m³	6.00 person/s	8.00 person/s	TD 250/200	VR 250
R03	54.60 m³	10.00 person/s	12.00 person/s TD 350/125	8.00 person/s	VR 330
TE01	28.60 m³	4.00 person/s	s	TD 250/200	VR 250
TE02	34.32 m³	4.00 person/s	8.00 person/s	TD 250/200	VR 250
TE03	54.60 m³	6.00 person/s	10.00 person/s TD 350/125		VR 300

EXTRAS

UPHOLSTERED BOARDS

Blind parts finished with upholstered boards with fabric of your choice (see range of samples).

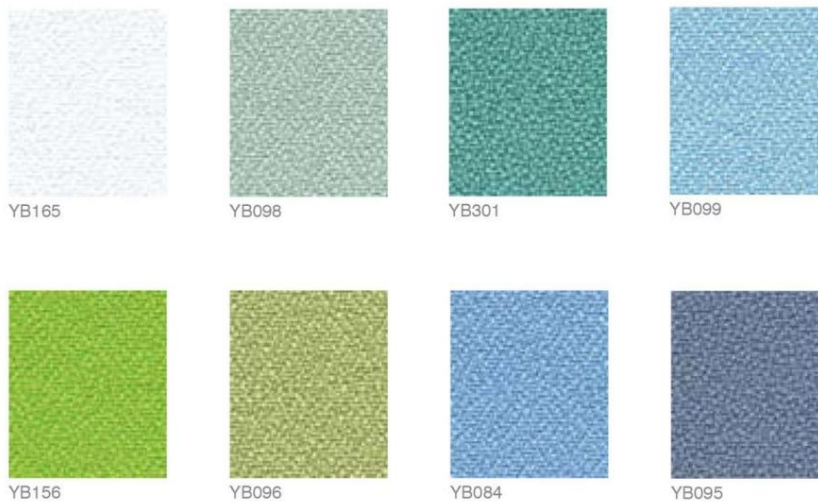


Basic option

Basic option for covering boards with synthetic fabric. Fabric made from 100% recycled polyester, which allows saving virgin raw materials and reducing environmental impact. With a non-glossy appearance, its bold color palette and The bright one is designed to complement the QBox.
This fabric is acoustically transparent and, as such, is ideal for use as a decorative covering for sound panels.

Composition	Environmental	Weight	Inflammability	Resistance to friction	Cleaning
100% Recycled Polyester Non-metallic dyes	Certified with EU Ecolabel OEKO-TEX® certified Standard 100 Made from 100% recycled polyester	260 g/m ² ±5% (440 g/tin.m ±5%)	EN 1021 - 1 (cigarette) EN 1021 - 2 (match) BS 7176 Low Hazard BS 476 Part 7 Class 1 EN 13501-1 Adhered class B, s1, d0 EN 13501-1 Un-adhered class B, s1, d2 Note: The degree of flammability depends on the type of foam used.	Wet: 4, Dry: 4 (ISO 105 - X12)	Vacuum frequently. Wash with a damp cloth or with appropriate upholstery soap.

Sample range





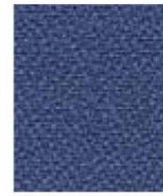
YB047



YB011



YB089



YB021



YB045



YB100



YB024



YB004



YB046



YB026



YB086



YB094



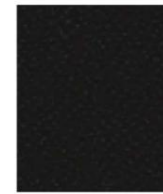
YB038



YB108



YB019



YB009



YB107



YB085



YB093



YB030



YB302



YB088



YB168



YB087



YB105



YB106



YB027



YB101



YB102



YB090



YB005



YB170



YB069



YB097



YB157

Premium option

Premium option for covering boards with fabric made from virgin wool. Made with 100% virgin wool, they transform This option is very lightweight, with a felted and milled finish. It has a color palette consisting of mixtures of Mélange and light tones, as well as subtle pastels and iridescent shimmers.

Composition	Environmental	Weight	Inflammability	Resistance to friction	Cleaning
100% Virgin Wool Non-metallic dyes	Rapidly renewable and compostable	260 g/m ² ±5% (440 g/l.in.m ±5%)	BS 476 Part 7 Class 1 BS 476 Part 6 Class 0 EN 13501-1 Adhered Class C, s1, d0	Wet: 4, Dry: 4 (ISO 105 - X12)	Vacuum regularly. Dry clean, or wash with a damp cloth.

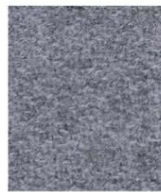
Sample range



LTH43



LTH63



LTH61



LTH39



LTH41



LTH64



LTH65



LTH68



LTH67



LTH44



LTH66



LTH40



LTH42



LTH46



LTH53



LTH57



LTH49



LTH52



LTH58



LTH54



LTH59



LTH55



LTH60



LTH50



LTH48



LTH62



LTH70



LTH69



LTH47



LTH56



LTH51

DECORATIVE STICKS

Qbox front finish with decorative slats.

